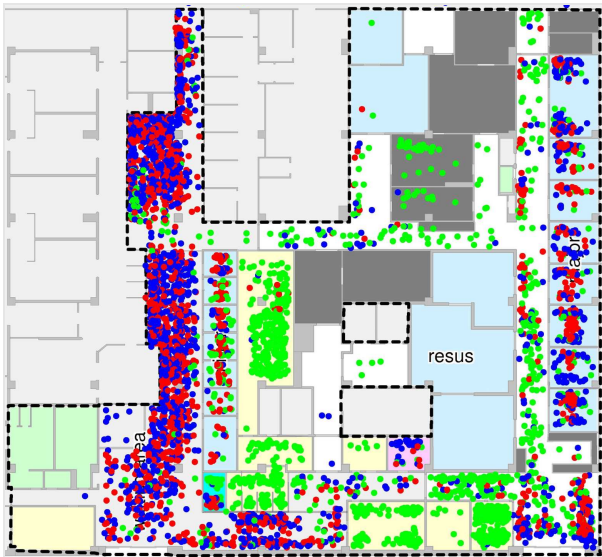


## Space Use Snapshot Survey

*Post occupancy evaluation of space use in buildings or urban spaces*

Observing patterns of space use provides building and public space managers with a clear understanding of what the users of a facility are doing. Intelligent Space has developed observation methods that do not require disturbance to the building users and can be undertaken in complex environments such as hospitals.



Static use snapshot of a hospital department

### Benefits

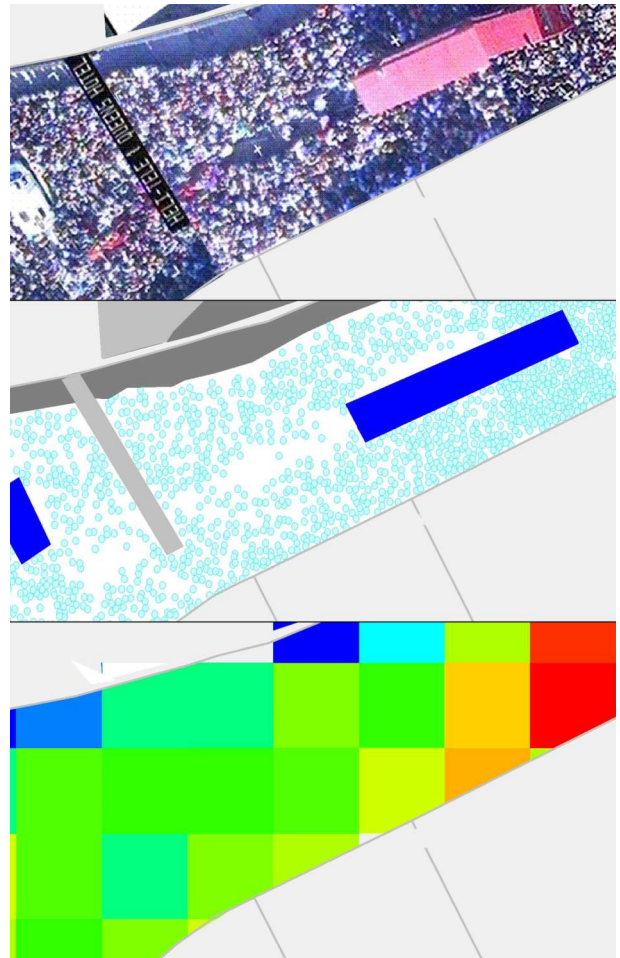
Space Use Snapshot Surveys provide a range of benchmarks:

- Crowd Density analysis.
- Public space activity levels.
- Workplace communication analysis.
- Shopping behaviour analysis (browsing ratios).

### Recent examples

These surveys have been used for a range of previous clients:

- We analysed helicopter footage to measure crowd density at the Notting Hill Carnival for the Greater London Authority.
- Space Use surveys were used to support design guidance and identify optimisation strategies for care delivery in a study of nine hospitals for NHS Estates.
- Space Use analysis has been used to advise the Home Office on crime prevention issues.



Calculating crowd density at the Notting Hill Carnival