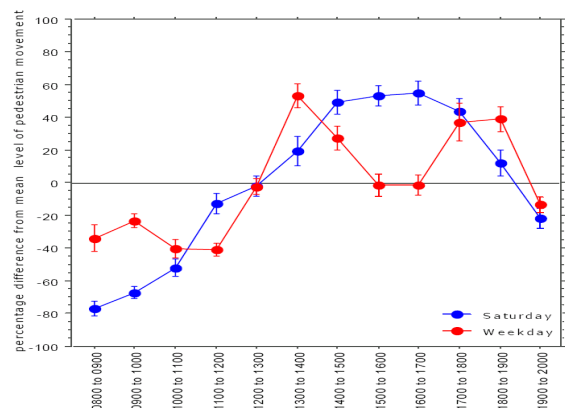


Tracking Pedestrian Volumes

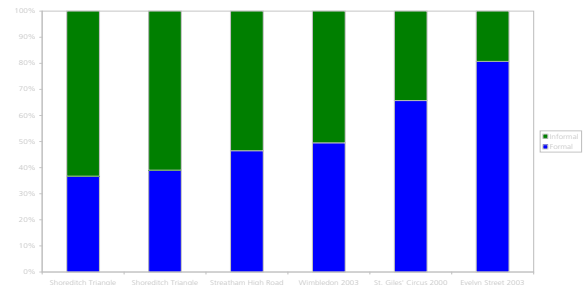
A guide to pedestrian monitoring techniques and scoping study of available London monitoring data for benchmarking purposes.

CLIENT CENTRAL LONDON PARTNERSHIP
LOCATION LONDON
YEAR 2004

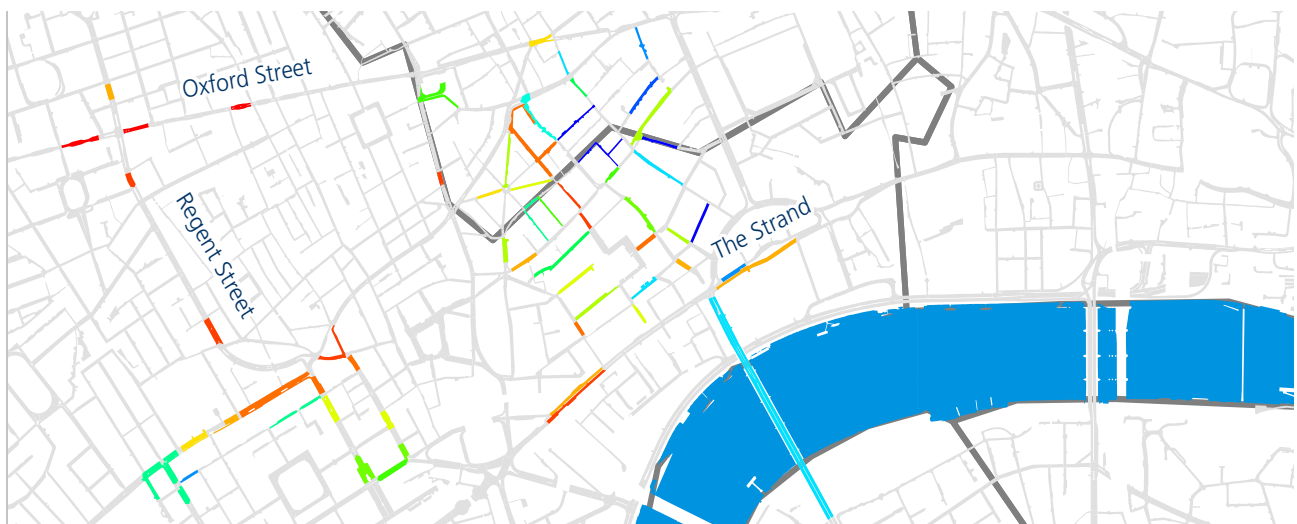
Intelligent Space undertook a scoping study review of the pedestrian monitoring systems of the London Boroughs on behalf of Central London Partnership (CLP). The study provides an overview of the range of different types of monitoring that can be undertaken and the benefits of each method. The report then summarises the monitoring activities and data availability in each of the Boroughs, in order to help facilitate reuse of data as a shared resource for benchmarking purposes by the Boroughs and other stakeholders.



Pedestrian flow profiles for a weekday and a Saturday



Bar chart comparing formal/ informal road crossing in different areas



Average pedestrian flow data received from boroughs in central London