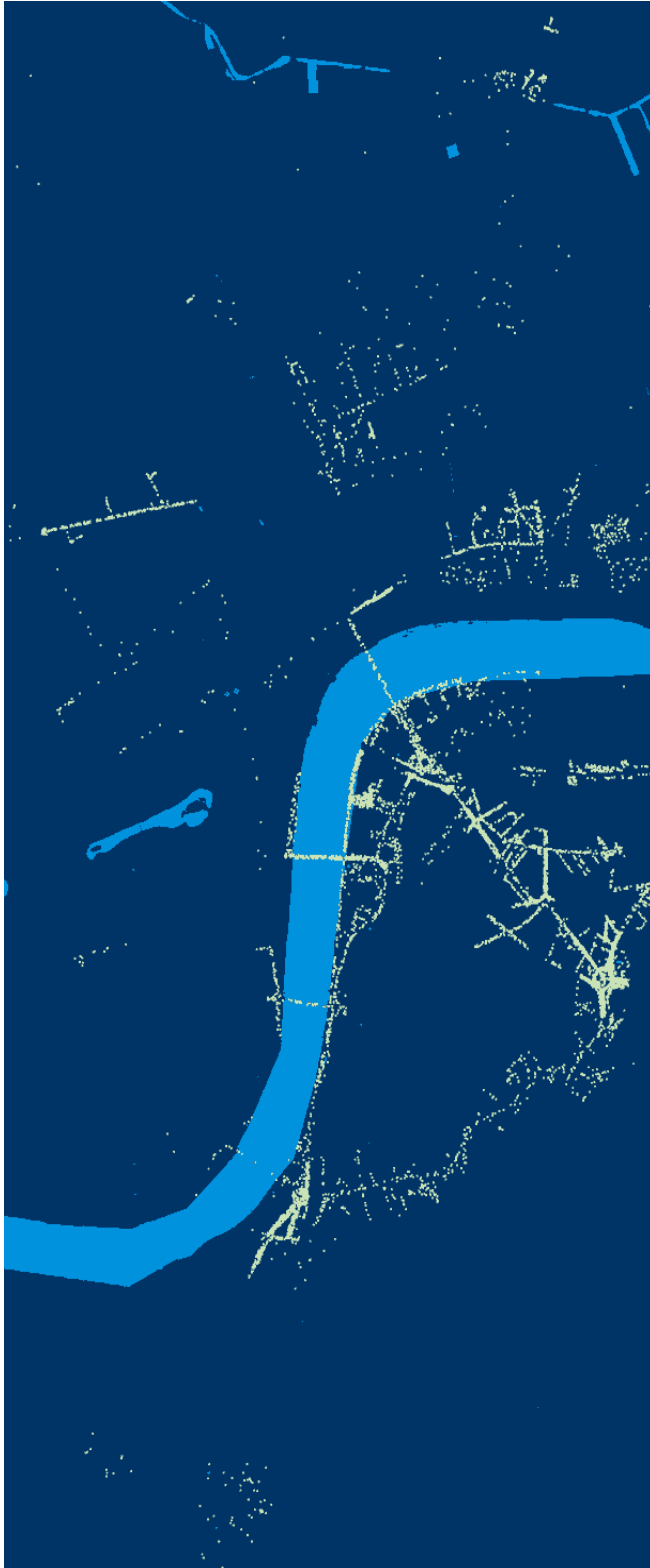


Database of Walking Infrastructure Initiatives



Development of a database of initiatives for the improvement of the pedestrian environment within central London. For Central London Partnership, London 2003

About the project

Intelligent Space have developed a spatial database of proposed pedestrian improvement schemes in Central London on behalf of Central London Partnership. The database has maps and schemes details for all schemes listed in Borough Spending Plans (BSPs) and Business Improvement District (BIDs), providing a strategic overview of initiatives.

The aim of the project is to support co-ordination on pedestrian improvements between different agencies and across local government boundaries and budgets. It will provide a tool to ensure that improvement schemes link together and create an integrated network. Multiple plans in the same area can be identified and inter-linked, and areas with underspend and low provision can be targeted for future spending.

The image on the left shows the spatial distribution of planned spending on walking schemes in BSPs and BIDs: one dot is equal to £1,000 of expenditure. The project is now being taken forward into a new stage, in which the database will be extended to include information from other stakeholder.

More information

Central London Partnership

www.c-london.co.uk

Intelligent Space

www.intelligentspace.com