

The Impact of the Built Environment On Care within A&E Departments

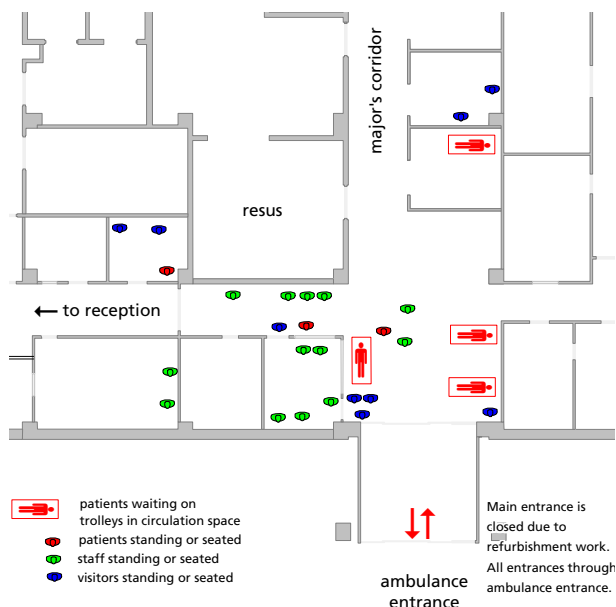
A research project evaluating space use and design functionality in eight hospitals to support new NHS design guidance.

CLIENT NHS ESTATES
LOCATION ENGLAND
YEAR 2002

NHS Estates commissioned Intelligent Space to research the influence of building design on the care of patients in A&E departments. The findings of the research provide an evaluation of the key design issues faced in A&E departments and recommendations for future A&E design.

The aims of the project were to:

- Support guidance for the building of future departments;
- Provide measures to evaluate planned A&E departments
- Identify potential problems prior to the construction of new departments; and
- Identify methods for post occupancy evaluation of departments.



Eight existing A&E departments were analysed as a basis for the research. Comprehensive surveys were carried out in each department to identify current use patterns. In addition, computer modelling was used to benchmark design characteristics such as visibility and surveillance. The role of the building design in the delivery of care at each stage of the patient's journey was analysed.

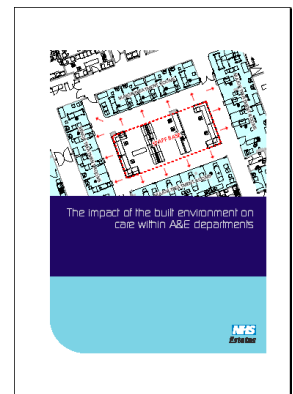
BENEFITS

"The key findings and recommendations from this work are now available and would be extremely useful to any trust redesigning or going through the new build of an A&E department.

The following types of issues are picked up:

- Patient flows
- Walking distances
- Visibility
- Wayfinding
- Privacy and Dignity
- Space use etc."

Source NHS Estates



RELATED WORK BY INTELLIGENT SPACE

- Design Guidance for Safer Hospitals for the Home Office, 2003. Analysis of building layout, crime and movement in Accident and Emergency departments.
- Support Services in A&E Departments for NHS Estates, 2003.
- Spatial Analysis of Critical Care Wards for NHS Estates, 2002. Analysis of surveillance levels in several ward layouts.